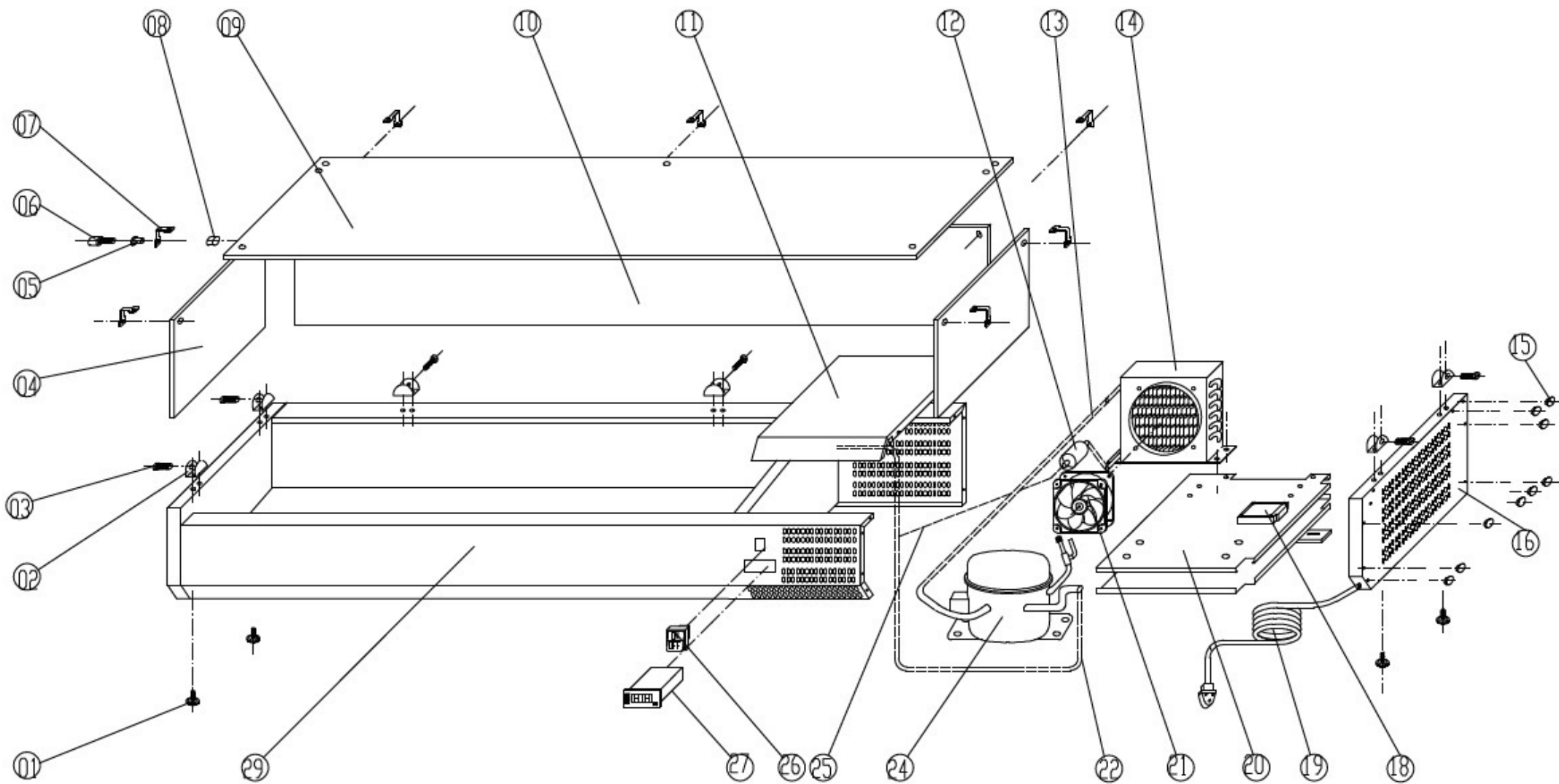


Explosionszeichnung

Kühlaufsatz
RX 1200



KBS Gastrotechnik GmbH - Johannes-Kepler-Str. 14 - 55129 Mainz



Spare Parts list of RX1200(VRX1200/380)

| N0. | CODE | NAME | MODEL | QUANTITY | MATERIAL | REMARK | |
|-----|-------------|-----------------------|------------------------------|----------|---------------|--------|--|
| 01 | S900.13 | FEET | | 4PCS | PLASTIC | | |
| 02 | VRX.01 | GLASS CLIP | | 6PCS | ALLOYED METAL | | |
| 03 | VRX.02 | GLASS CLIP FIXED BOLT | | 6PCS | STAINLESS | | |
| 04 | VRX38.3 | SIDE GLASS | | 2PCS | SAFTY GLASS | | |
| 05 | VRX.04 | BUSHING | | 14PCS | | | |
| 06 | VRX.05 | GLASS FIXED BOLT | M6 | 14PCS | ALLOYED METAL | | |
| 07 | VRX.06 | GLASS LINKED CLIP | | 7PCS | STAINLESS | | |
| 08 | VRX.07 | GLASS CLIP FIXED NUT | | 14PCS | STAINLESS | | |
| 09 | VRX38/12.8 | TOP GLASS | | 1PC | SAFTY GLASS | | |
| 10 | VRX38/12.9 | BACK GLASS | | 1PC | SAFTY GLASS | | |
| 11 | VRX38.10 | UNIT ROOM COVER | | 1PC | STAINLESS | | |
| 12 | S900.44 | FILTER DRIER | 20g | 1PC | XH-9 | | |
| 13 | S900.36 | DISCHARGE TUBE | Φ6 | 1PC | COPPER | | |
| 14 | VRX.11 | CONDENSER | 1/5HP | 1PC | COPPER/AL | | |
| 15 | S900.03 | PLASTIC CAP | Φ13 | 9PCS | PLASTIC | | |
| 16 | VRX38.12 | SIDE COVER | | 1PC | STAINLESS | | |
| 18 | S900.48 | JUNCTION BOX | | 1 | | | |
| 19 | S900.47 | PLUG | LT312/1.5MM ² x3G | 1PC | | | |
| 20 | VRX38.14 | UNIT BOARD | | 1 | ZINCFY STEEL | | |
| 21 | S900.34 | CONDENSER FAN | SA1238A2 | 1PC | | | |
| 22 | S900.39 | SUCTION TUBE | Φ8 | 1PC | COPPER | | |
| 24 | VRX.18 | COMPRESSOR | OF789 | 1PC | | | |
| 25 | VRX.15 | CAPILLARY | Φ2.3x0.8x2000 | 1PC | COPPER | | |
| 26 | S900.01 | MAIN SWITCH | DRH-2415-3 | 1PC | | | |
| 27 | S900.02 | THERMOSTAT | XR20C | 1PC | | | |
| 29 | VRX38/12.17 | BODY | 1200*395*430 | 1PC | | | |