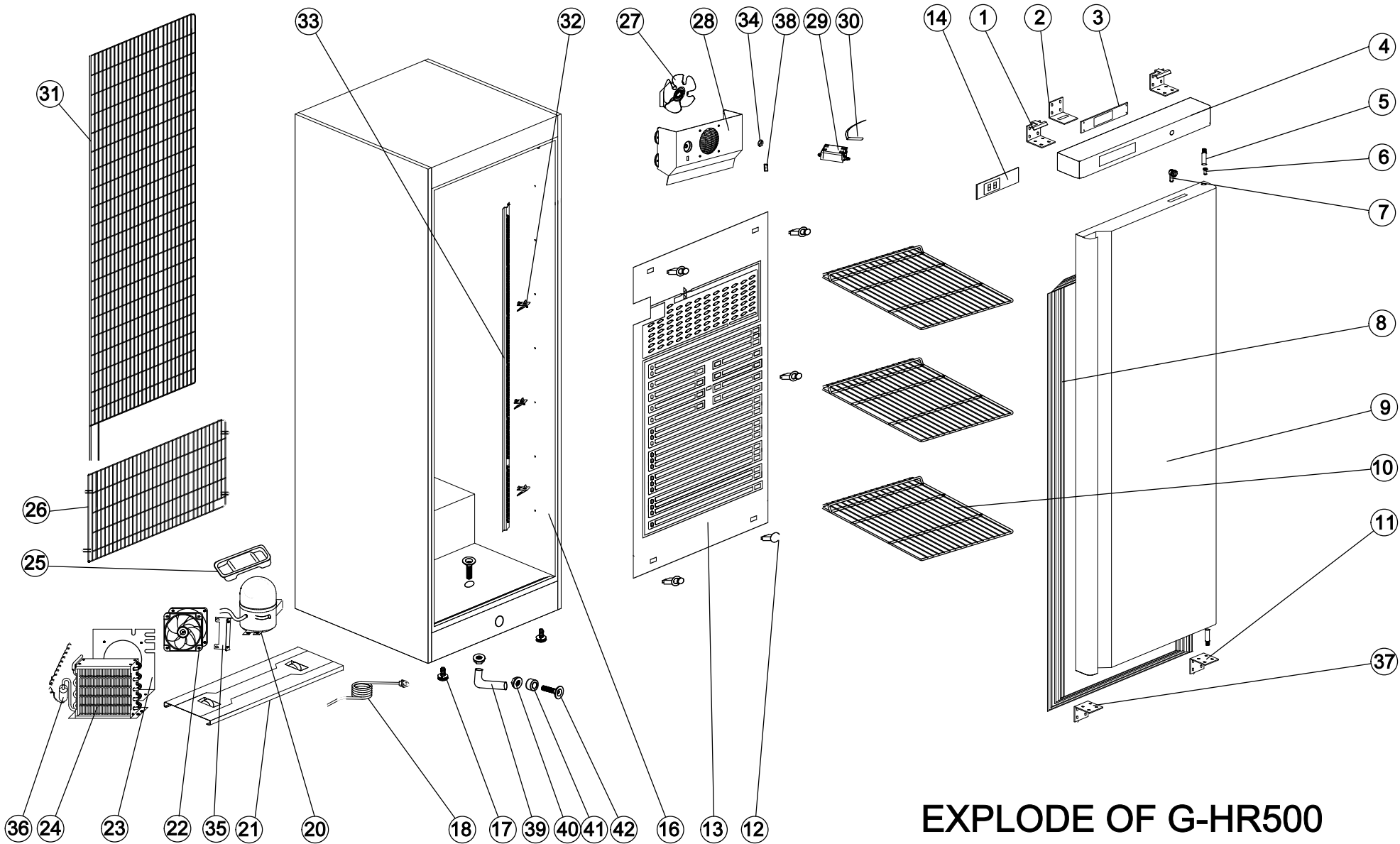


# EXPLOSIONSZEICHNUNG



KBS Gastrotechnik GmbH – Schoßbergstraße 26 – 65201 Wiesbaden



**EXPLODE OF G-HR500**

**SPARE PARTS LIST KBS 502 U**

<b>NO</b>	<b>CODE</b>	<b>NAME</b>	<b>NEW CODE</b>	<b>QTY</b>
1	HF600.01	UP HINGE	110110036	2PCS
2	HF600.02	HOOK OF LOCK	110110044	1PC
3	HF600.09A	THERMOSTAT SUPPORT	108130004	1PC
4	HR500.07	FRONT PANEL	108130013	1PC
5	HF600.19	HINGE AXIS	107110010	2PCS
6	GN2100TN.07	BUSHING	108300029	2PCS
7	GN650TN.86	LOCK	107130008	1PC
8	HR500.01	GASKET	108270157	1PC
9	HR500.02	DOOR	5107000688	1PC
10	HR500.03	SHELF	109020132	3PCS
11	HF600.08	DOWN HINGE	110110049	1PC
12	HR600.06	EVAPORATOR FIXER	108300130	5PCS
13	HR600.04	EVAPORATOR	113040006	1PC
14	S900.02	THERMOSTAT	104020086	1PC
16	HR500.04	BODY	5102000550	1PC
17	S900.13	FEET	108300183	2PCS
18	S900.47	PLUG	104050031	1PC
20	G-S903.01	COMPRESSOR	104010100	1PC
21	HR500.05	UNITE BOARD	5202001692	1PC
		WHEEL	108300144	2PCS
		WHEELSPINDLE	107110009	2PCS
22	S900.34	CONDENSER FAN	104030036	1PC
23	HR600.10	CONDENSER FAN SUPPORT	5202001695	1PC
24	HR110.06	CONDENSER	113020067	1PC
25	S900.40	WATER PAN	108300172	1PC
26	HR500.08	UNITE ROOM GRILLS	109040052	1PC
27	SC268M.01	FAN	104030050	1PC
28	SC188.08	FAN SUPPORT	108300113	1PC
29	S900.31	SENSOR FIXED BOX	108110314	1PC
30	S900.32	SENSOR	104020097	1PC
	S900.32	SENSOR	104020099	1PC
31	HF500.09	BACK CONDENSER	113020094	1PC
32	G350.08	SHELF CLIP	107090002	12PCS
				S
33	HR500.06	SUPPORT	103010025	4PCS
34		SWITCH COVER	108300114	1PC

35		CONDENSER FAN FIXED BOARD	5202001651	1PC
36		FILTER DRIER	107180011	1PC
37		DOWN HINGE /LEFT	108120055	1PC
38		TOP LAMP WALL	108300223	1PC
39		WATER PIPE	114010034	1PC
40	S900.14	DRAIN PIPE NUT	108300064	2PCS
41		DRAIN PIPE BUSHING	108300088	1PC
42		DRAIN PIPE	108300081	2PCS